



# MultiBeast

MultiBeast is an all-in-one post-installation utility designed to enable boot from a hard drive. It also features a collection of drivers and customization options.



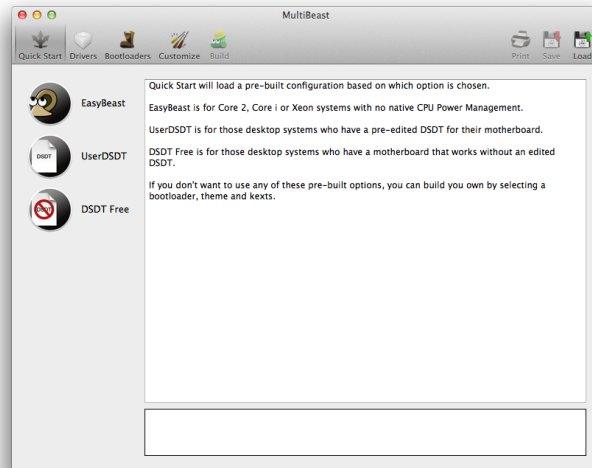
This document will reference all of the features of MultiBeast, as described inside the app itself. Please read all of the descriptions carefully. You may run MultiBeast as often as you like, but keep in mind that it will not uninstall items, just overwrite them.

**tonymacx86 & MacMan**  
[www.tonymacx86.com](http://www.tonymacx86.com)

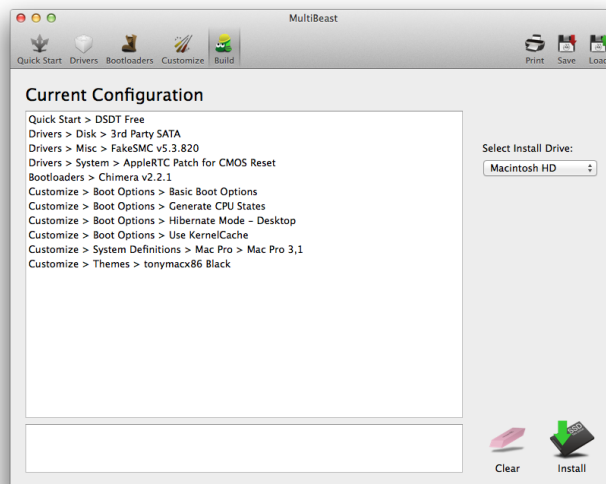
**v6.0**



# How to Use MultiBeast



1. Click **Quick Start** to choose EasyBeast, UserDSDT, or DSDT-Free
2. Click **Drivers** for Audio, Graphics, and Network options
3. Click **Customize** for further options
4. Click **Print** or **Save** to back up your configuration
5. Click **Build** then **Install**
6. Restart computer to complete installation



Thanks to the [Chameleon](#) team, [netkas](#), Project OS X, kozlek, toleda, Lnx2Mac, flAKed, cmf, Shailua, the candle, Henties, Rehabman, Zenith432 and hnak for their contributions that make this tool possible. Additional thanks to the tonymacx86 community for their testing and contributions to this work.

**Special thanks to all of the tonymacx86.com mods.**



## Quick Start

Quick Start will load a pre-built configuration based on which option is chosen. If you don't want to use any of these pre-built options, you can build your own by selecting a bootloader, theme and kexts.

## EasyBeast

EasyBeast is for Core 2, Core i or Xeon systems with no native CPU Power Management.

EasyBeast pre-configured choices:

Drivers -> Disk -> 3rd Party SATA  
Drivers -> Misc -> ElliottForceLegacyRTC  
Drivers -> Misc -> EvOreboot  
Drivers -> Misc -> FakeSMC v5.3.820  
Drivers -> Misc -> NullCPUPowerManagement  
Drivers -> System -> AppleRTC Patch for CMOS Reset  
Bootloaders -> Chimera v2.2.1 r2148  
Customize -> Boot Options -> Basic Boot Options  
Customize -> Boot Options -> Use KernelCache  
Customize -> System Definition -> Mac Pro -> Mac Pro 3,1  
Customize -> Themes -> tonymacx86 Black



## UserDSDT

UserDSDT is for those desktop systems who have a pre-edited DSDT for their motherboard.

UserDSDT pre-configured choices:

Drivers -> Disk -> 3rd Party SATA  
Drivers -> Misc -> FakeSMC v5.3.820  
Drivers -> System -> AppleRTC Patch for CMOS Reset  
Bootloaders -> Chimera v2.2.1 r2148  
Customize -> Boot Options -> Basic Boot Options  
Customize -> Boot Options -> Generate CPU States  
Customize -> Boot Options -> Hibernate Mode - Desktop  
Customize -> Boot Options -> Use KernelCache  
Customize -> System Definition -> Mac Pro -> Mac Pro 3,1  
Customize -> Themes -> tonymacx86 Black

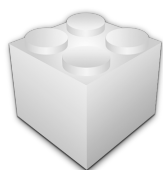


## DSDT-Free

DSDT Free is for those desktop systems who have a motherboard that works without a DSDT. DSDT Free pre-configured choices:

Drivers -> Disk -> 3rd Party SATA  
Drivers -> Misc -> FakeSMC v5.3.820  
Drivers -> System -> AppleRTC Patch for CMOS Reset  
Bootloaders -> Chimera v2.2.1 r2148  
Customize -> Boot Options -> Basic Boot Options  
Customize -> Boot Options -> Generate CPU States  
Customize -> Boot Options -> Hibernate Mode - Desktop  
Customize -> Boot Options -> Use KernelCache  
Customize -> System Definition -> Mac Pro -> Mac Pro 3,1  
Customize -> Themes -> tonymacx86 Black





## Drivers

Drivers provide additional functionality to the operating system. The drivers contained here provide either enhanced hardware support or are mandatory for non-DSDT based systems. Be sure to read the descriptions carefully before installation.

### Audio

Collection of kexts to enable the on-board Audio on your system. Make sure to read the descriptions carefully and only install the correct files for your audio codec.

#### Realtek ALC8xx

Enables audio for motherboards featuring the Realtek ALC887/888b, ALC888, ALC885/889a, ALC889, ALC892, ALC898 or ALC1150 high-definition audio codecs. Click the triangle to expand and then choose the appropriate codec for your environment.

#### With DSDT

Replaces /System/Library/Extensions/AppleHDA.kext with a patched 10.9.0 AppleHDA.kext edited by toleda to enable full functionality for the Realtek ALC887/888b, ALC888, ALC885/889a, ALC889, ALC892, ALC898 or ALC1150 high-definition audio codecs. Patches /Extra/DSDT.aml to replace the current layout-id with layout-id 1.

#### Without DSDT

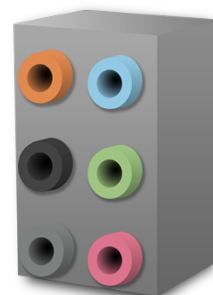
Replaces /System/Library/Extensions/AppleHDA.kext with a patched 10.9.0 AppleHDA.kext edited by toleda to enable full functionality for the Realtek ALC887/888b, ALC888, ALC885/889a, ALC889, ALC892, ALC898 or ALC1150 high-definition audio codecs. Installs /System/Library/Extensions/HDAEnabler1.kext.

#### Optional 3 Port Audio Enabler

This optional HDAEnabler is for those motherboards that ONLY have 3 audio ports. Otherwise when using layout-id 1 you will see output ports that doesn't exist. Installs HDAEnabler2.kext in /System/Library/Extensions and removes any HDAEnabler found.

#### Universal

Enables audio for most codecs. Uses VoodooHDA which is an open source audio driver for devices compliant with the Intel High Definition Audio (HDA) specification, based primarily on code from the FreeBSD hdac driver. It is intended as an Intel-only replacement for AppleHDA. Enables sound without DSDT patching. Click the triangle to expand and then choose the appropriate version.



#### VoodooHDA 0.2.1 / 0.2.2

VoodooLabs branches. Installs VoodooHDA.kext in /System/Library/Extensions.

#### VoodooHDA 0.2.56 / 0.2.61 / 2.7.2 / 2.7.3 / 2.8.2 / 2.8.4

Installs the Project OS X branch of VoodooHDA.kext in /System/Library/Extensions and VoodooHDA.prefPane in /System/Library/PreferencePanels. 2.8.2/2.8.4 installs VoodooHdaSettingsLoader.app in /Applications and getdump in /usr/local/bin.

#### VoodooHDA VT2021 2.7.2

Project OS X branch version 2.7.2 edited by lazybon3 specifically for the VIA VT2021.



## Disk

Collection of kexts that provide enhanced hardware support for optical and disk drives.

### 3rd Party SATA

Provides support for the ASMedia ASM1061, JMicron 36x (aka GSATA) and Marvell 88SE912x, 88SE9172 and 88SE9230 SATA controllers. All drives connected to these ports show on the desktop as Internal and can NOT be hot swapped. Installs AHCI\_3rdParty\_SATA.kext in /System/Library/Extensions.



### 3rd Party eSATA

Provides support for the ASMedia ASM1061, JMicron 36x (aka GSATA) and Marvell 88SE912x, 88SE9172 and 88SE9230 SATA controllers. All drives connected to these ports show on the desktop as External and can be hot swapped. Installs AHCI\_3rdParty\_eSATA.kext in /System/Library/Extensions.

### IOAHCIBlockStorageInjector

Makes drives appear as internal. Installs IOAHCIBlockStorageInjector.kext in /System/Library/Extensions. Not needed when using AHCI\_3rdParty\_SATA.kext.

### Trim Enabler - 10.9.0 TRIM Patch

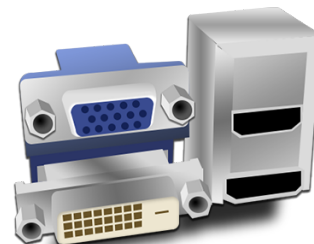
Patches the 10.9.0 version of /System/Library/Extensions/IOAHCIFamily.kext/Contents/PlugIns/IOAHCIBlockStorage.kext to enable TRIM on non-Apple SSD drives.

## Graphics

Collection of patches to fully enable graphics capabilities.

### Intel Graphics Patch for Mixed Systems

Patches AppleIntelSNBGraphicsFB.kext and AppleIntelFramebufferCapri.kext to enable the use of the HD 3000 GPU on 7-Series motherboards and the HD 4000 GPU on 6-Series motherboards.



## Misc

Collection of miscellaneous kexts that provide enhanced hardware support or mandatory for systems not using a DSDT. EasyBeast and UserDSDT already installs all of the mandatory kexts. Be sure to read the descriptions carefully before installation.

### ElliottForceLegacyRTC.kext

Prevents a CMOS reset on reboot without a DSDT. Installs ElliottForceLegacyRTC.kext in /System/Library/Extensions.

### EvOreboot

If you don't have a DSDT, shutdown and reboot do not work without this kext. Installs EvOreboot.kext in /System/Library/Extensions.

### FakeSMC

FakeSMC.kext is the only absolutely mandatory kext, and is required for booting the system. Original by netkas, new branch by kozlek. Installs FakeSMC.kext in /System/Library/Extensions/.



## FakeSMC Plugins

FakeSMC plugins from kozlek's branch to allow software access to hardware monitors.

### Motherboard Plugins

Installs FakeSMC plugins ACPI Sensors.kext, CPUSensors.kext, GPUSensors.kext and LPCSensors.kext in /System/Library/Extensions/FakeSMC.kext/Contents/PlugIns. These plugins allow software access to motherboard hardware monitors.

### HWMonitor Application

Hardware Monitoring application from kozlek's branch. Requires FakeSMC Motherboard Plugins. Installs /Applications/HWMonitor.app.

## NullCPUPowerManagement

Disables AppleIntelCPUPowerManagement.kext to prevent kernel panic without proper HPET DSDT edits. Installs NullCPUPowerManagement.kext in /System/Library/Extensions.

## PS/2 Keyboard/Mouse/Trackpad

Enables non-USB keyboards, mice and trackpads. Installs AppleACPIPS2Nub.kext and ApplePS2Controller.kext in /System/Library/Extensions.



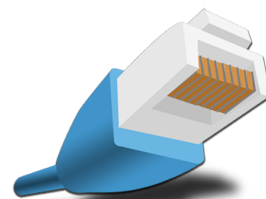
## USB 3.0 – Universal by Zenith432

Zenith432's GenericUSBXHCI.kext to enable USB 3.0. Installs GenericUSBXHCI.kext in /System/Library/Extensions/ and xhcdump in /usr/local/bin. Also enables USB 2.0 on LGA 1156 motherboards that aren't using a DSDT and don't enable Rate Matching Hub in BIOS.

## Network

### Atheros - Shailua's ALXEthernet

Enables Atheros AR8132 Fast Ethernet, AR8131 Gigabit Ethernet, AR8151 v1.0 Gigabit Ethernet, AR8151 v2.0 Gigabit Ethernet, AR8152 v1.1 Fast Ethernet and AR8152 v2.0 Fast Ethernet controllers. Shailua's port of Linux Qualcomm Atheros alx Ethernet driver. Installs ALXEthernet.kext in /System/Library/Extensions/IONetworkingFamily.kext/Contents/PlugIns.



### Intel - Hnak's AppleIntelE1000e

Enables Intel 825xx ethernet controllers. hnak's port of the e1000.sourceforge.net Intel Wired Ethernet for Linux driver. Installs AppleIntelE1000e.kext in System/Library/Extensions/IONetworkingFamily.kext/Contents/PlugIns.

### Realtek - Lnx2Mac's RealtekRTL81xx

Enables Realtek 81xx Ethernet controllers. Lnx2Mac's port of the Linux RTL81xx driver merged into Chuck Fry's "Chucko R1000SL" kext. Installs RealtekRTL81xx.kext in /System/Library/Extensions.

### Realtek – AppleRTL8169Ethernet

Official Realtek driver for 81xx Ethernet controllers. Installs AppleRTL8169Ethernet.kext in /System/Library/Extensions/IONetworkingFamily.kext/Contents/PlugIns.





# System

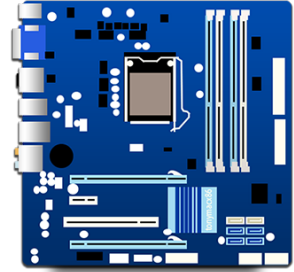
## AppleACPIPlatform Rollback

### 10.6.8 Rollback for ASUS X58 Systems

Replaces the current AppleACPIPlatform.kext in /System/Library/Extensions with an patched 10.6.8 AppleACPIPlatform.kext by ErmaC for ASUS X58 motherboards running OS X Lion 10.7.4 or later.

### 10.8.1 Rollback for ASUS X58 Systems

Replaces the current AppleACPIPlatform.kext in /System/Library/Extensions with the 10.8.1 version. Required on some non-Gigabyte motherboards.



## Patched AppleIntelCPUPowerManagement

Replaces the current /System/Library/Extensions/AppleIntelCPUPowerManagement.kext with a version that was patched using AICPMPatch by el coniglio. Deletes /System/Library/Extensions/NullCPUPowerManagement.kext if found.

## AppleRTC Patch for CMOS Reset

Patches /System/Library/Extensions/AppleRTC.kext/ to prevent CMOS resets under Mavericks.



## Bootloaders

Install to make your drive bootable. Does not include any themes.

### Chimera v2.2.1 r2248

MacMan's branch of Chameleon 2.2.

### Chimera v2.1.2 r2248

MacMan's branch of Chameleon 2.2.

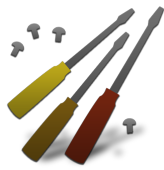
### Chimera v2.0.1 r2109

MacMan's branch of Chameleon 2.1.

### Chimera v1.11.1 r1394

MacMan's branch of Chameleon 2.0.





# Customize

A collection of boot time configuration files and system customization options.

## Boot Options

Contains scripts to edit /Extra/org.chameleon.Boot.plist files to enable/disable special boot loader features at startup.

### Basic Boot Options

Installs /Extra/org.chameleon.Boot.plist with the minimum required options, EthernetBuiltIn=Yes, GraphicsEnabler=No, IGPEnabler=Yes, Legacy Logo=Yes and Timeout=2

### DropSSDT=Yes

Adds DropSSDT=Yes to /Extra/org.chameleon.Boot.plist

### Generate CPU States

Adds GenerateCStates=Yes and GeneratePStates=Yes to /Extra/org.chameleon.Boot.plist

### GraphicsEnabler=Yes

Changes GraphicsEnabler=No to GraphicsEnabler=Yes in /Extra/org.chameleon.Boot.plist.

### Hibernate Mode - Desktop

Configures the system for Desktop power management hibernate mode and deletes /var/vm/sleepimage to reclaim disk space.

### Hibernate Mode - Laptop

Configures the system for Laptop power management hibernate mode

### IGPEnabler=No

Changes IGPEnabler=Yes to IGPEnabler=No in /Extra/org.chameleon.Boot.plist

### Instant Menu

Adds Instant Menu=Yes or replaces Timeout=n in /Extra/org.chameleon.Boot.plist

### PCI Root ID Fix

Adds PCIRootUID=1 to Kernel Flags in /Extra/org.chameleon.Boot.plist

### Use KernelCache

Adds UseKernelCache=Yes to /Extra/org.chameleon.Boot.plist. Not needed when using EasyBeast or UserDSDT.

### Verbose Boot

Adds -v to Kernel Flags in /Extra/org.chameleon.Boot.plist.

### 1080p Display

Adds Graphics Mode = "1920x1080x32" or changes Graphics Mode to "1920x1080x32" in /Extra/org.chameleon.Boot.plist.







108

## SSDT Options

Optimized versions of Sandy Bridge Core i CPU specific SSDTs. Each CPU type supports a specific maximum Turbo Boot clock rate. Installs SSDT.aml in /Extra.

### Sandy Bridge Core i5

Optimized SSDT supporting Sandy Bridge Core i5 CPUs with a maximum Turbo Boost clock of 3.8 GHz. Installs SSDT.aml in /Extra.

### Sandy Bridge Core i7

Optimized SSDT supporting Sandy Bridge Core i7 CPUs with a maximum Turbo Boost clock of 3.9 GHz. Installs SSDT.aml in /Extra.

### Sandy Bridge Core i5/i7 Overclocked

Optimized SSDT supporting Sandy Bridge Core i5 or Core i7 CPUs overclocked up to 4.2 Ghz. Installs SSDT.aml in /Extra.



## System Definitions

Contains pre-edited smbios.plist files that will identify your system as a specific Mac model. MacPro3,1 is installed by default by EasyBeast, and UserDSDT installations, and is the general recommendation.

### iMac

These pre-edited smbios.plist files will identify your system as an iMac.

### Mac Pro

These pre-edited smbios.plist files will identify your system as a Mac Pro.

### MacBook Pro

These pre-edited smbios.plist files will identify your system as a MacBook Pro.

### Mac mini

These pre-edited smbios.plist files will identify your system as a Mac mini.



## Themes

Themes for bootloader GUI customization. Installed in /Extra.

### Chameleon 2.1 Default

Default Chameleon theme

### Chameleon 2.2 Default

Default Chameleon theme

### tonymacx86 remixed

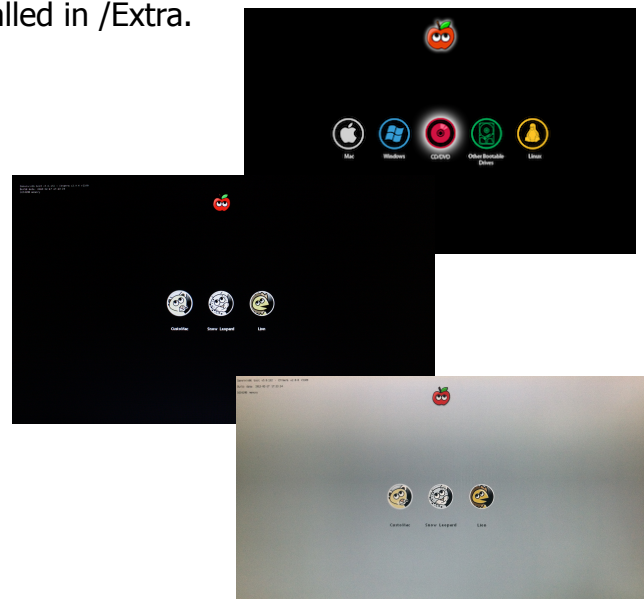
Alternate tonymacx86 theme by Complx

### tonymacx86 Black

Default tonymacx86 theme by Adamsmasher

### tonymacx86 White

Alternate tonymacx86 theme by Adamsmasher





This tool was created for your personal use and may not be sold or re-distributed without the express written consent of tonymacx86 LLC.

This tool is provided "as is" without warranties of any kind, either expressed or implied, including, but not limited to, the implied warranties of merchantability and fitness for a particular purpose. The entire risk as to the quality and performance of this tool is with you. Should the tool prove defective, you assume the cost of all necessary servicing, repair or correction.

Please consider a [contribution](#) to support further MultiBeast development. Thanks in advance!

**Copyright ©2013 tonymacx86 LLC**

The copyright to the original works contained within are retained by the original creators